



 TOPCON
DT-200 series
DIGITAL THEODOLITE

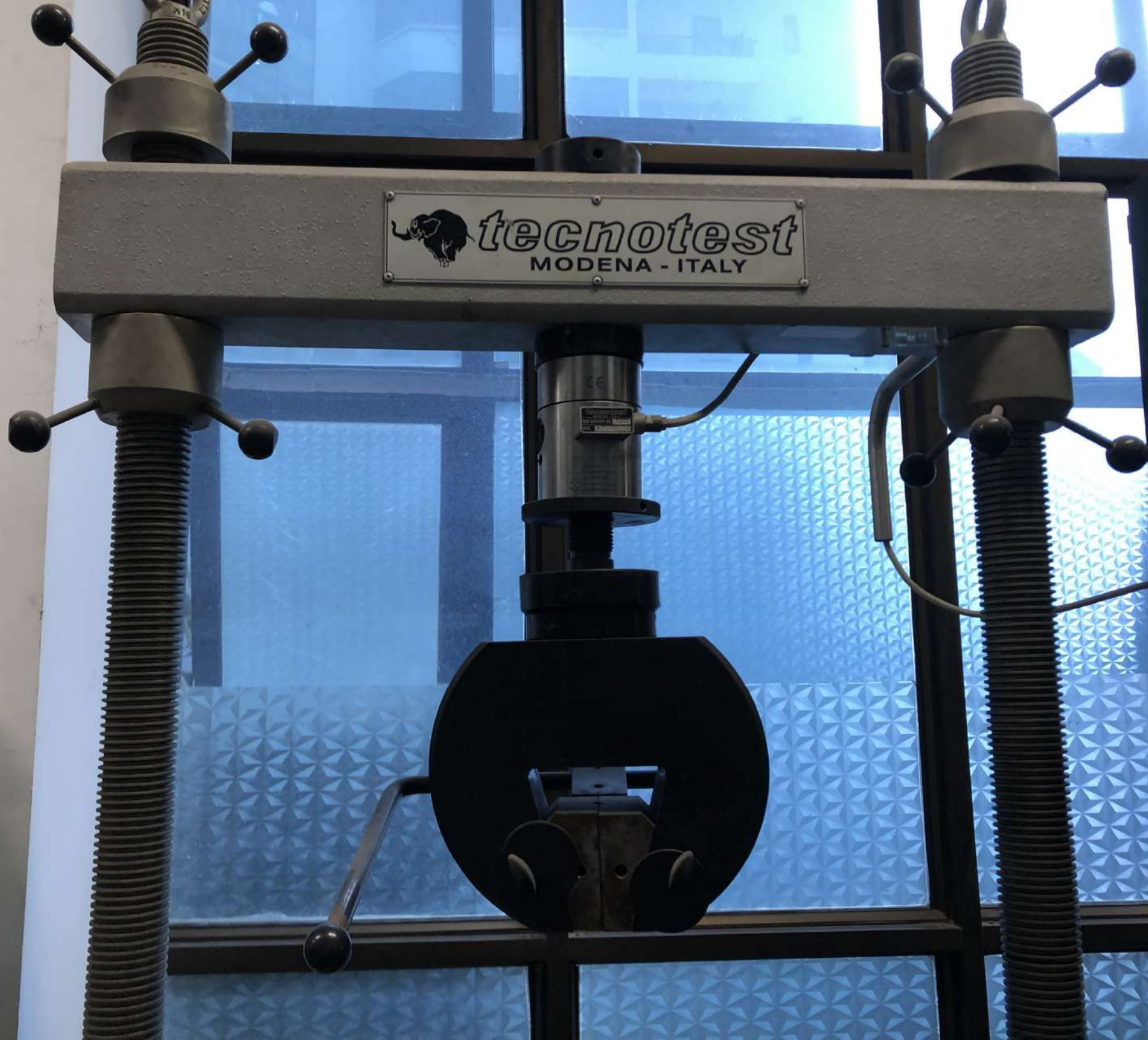
BCA 7/1
TOPCON
DT-200





tecnotest

MODENA - ITALY



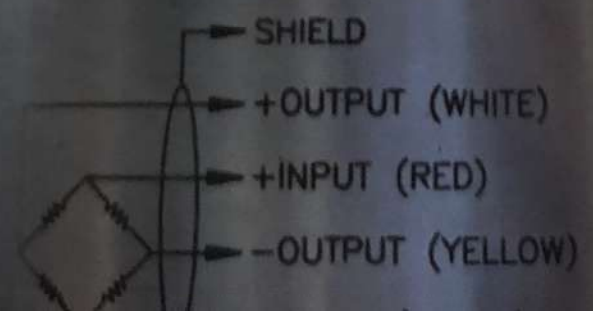
— 10 —



tecnotest
MODENA - ITALY
MAX CAPACITY KN. 100
MOD. AP 032 / 100



Nr. 50869



10



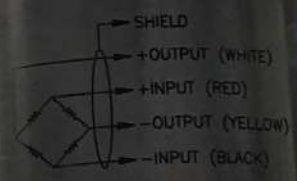
tecnotest

MODENA - ITALY

MAX CAPACITY KN. 1000

MOD. AP 032 1103

Nr. 50869





tecnolest
Modelo: T-100
Número: 100



tecnotest

Macchina Tipo F 010

Matricola N° 20001



CE

MACCHINA SERIE
MATICOLA N.
ANNO DI COSTRUZIONE

Technotest
MODENA-ITALY



CE

MACCHINA SERIE

F 010

MATRICOLA N.

20001

ANNO DI COSTRUZIONE

2000

 **BỘ GIAO THÔNG VẬN TẢI**
CỤC ĐĂNG KÝ VIỆT NAM

Tem kiểm chuẩn số :

Ngày kiểm chuẩn :

Ngày kiểm chuẩn lần tới :

VN REGISTER

Phiếu kiểm kê 0h 04/01/2021

Đơn vị sử dụng: VMTC

Mã tài sản: A.2.27.03





6

5

7

220V - 50Hz





SET



UL



PASS



LL



IZOD 160 Joule



CHARPY 300 Joule



ENTER
* RANGE
6 STATS
4 RESET



PRINT

Phiếu kiểm kê 0h 04/01/2021
Đơn vị sử dụng: VMTC
Mã tài sản: A.2.27.07



TecEquipment Ltd

Bonsall St, Long Eaton,
Nottingham, NG10 2AN, England.
Tel: 0602-722611
Fax: 0602-731520

MODEL/
SERIAL No

SUPPLY

MADE IN ENGLAND

**REFER
TO
MANUAL**



Use guards

www.dewetron.com

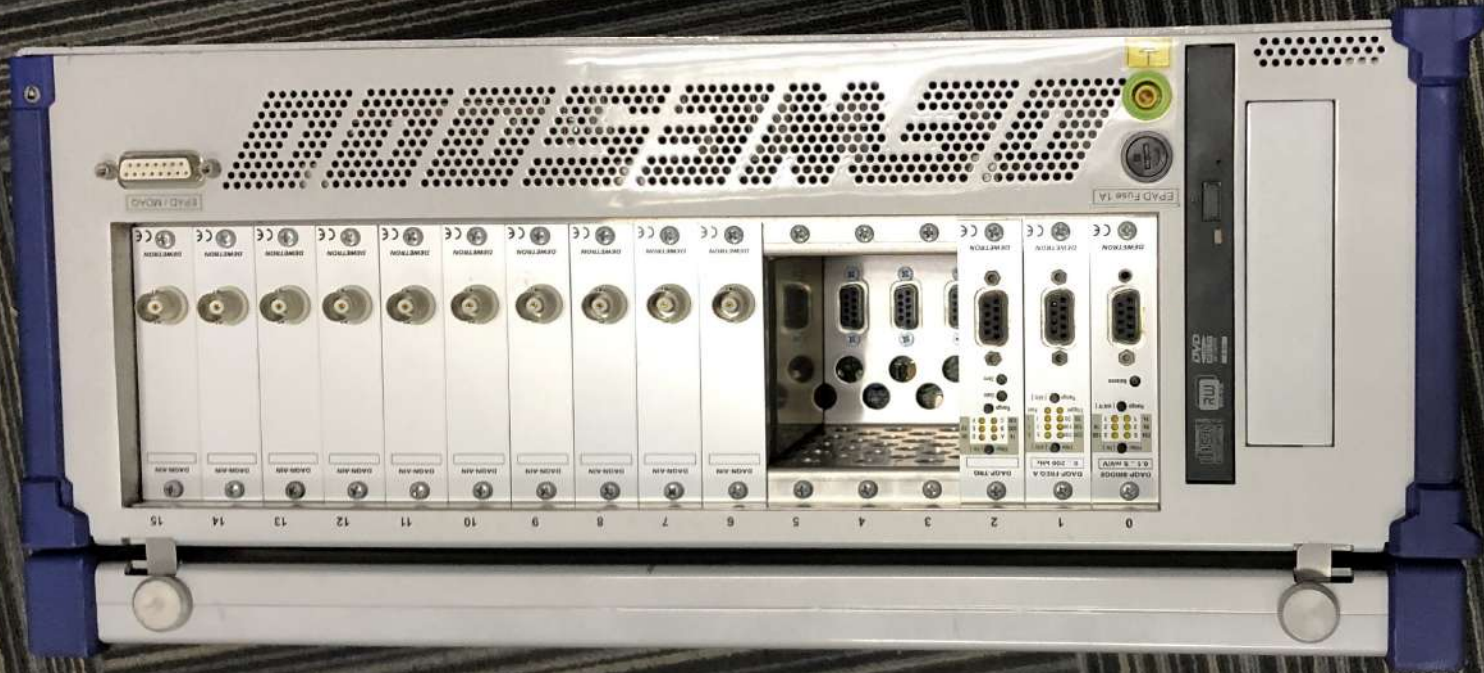
DEWETRON

Mos Schmidt









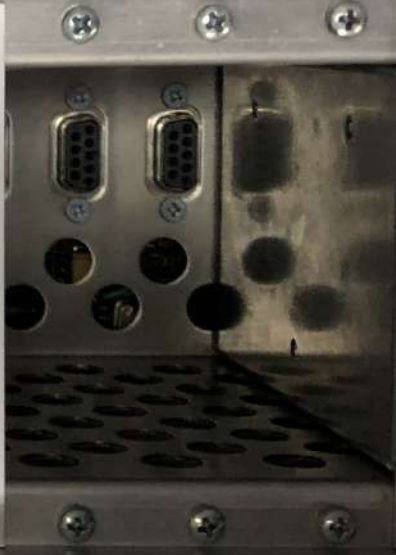


EPAD / MDAQ



DEWETRON	DEWETRON	DEWETRON	DEWETRON	DEWETRON	DEWETRON	DEWETRON	DEWETRON	DEWETRON	DEWETRON
DAON-AIN	DAON-AIN	DAON-AIN	DAON-AIN	DAON-AIN	DAON-AIN	DAON-AIN	DAON-AIN	DAON-AIN	DAON-AIN

15 14 13 12 11 10 9 8 7 6 5 4 3 2



DAOP-FREQ-A	DAOP-FREQ-A
DAOP-TRO	DAOP-TRO



EPAD Fuse (A)

DEWETRON

DAON-AIN

DEWETRON

DAOP-BRIDGE

Balance

Range [mV]

Filter [Hz]

0.1 .. 5 mV

DEWETRON

DAOP-FREQ-A

Trigger

Range [KHz]

Filter [KHz]

0 .. 200 KHz

DEWETRON

DAOP-TRO

Zero

Gain

Range

Filter [Hz]

DVD COMPACT DISC RW DVD-R DL REWRITABLE

6 5 4 3 2 1 0

CE

worldwide

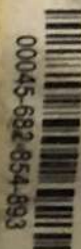


DEWETRON

Parkring 4, A-8074 Graz / AUSTRIA
Tel.: +43 (0) 316 - 30700, Fax.: - 307090

Type:	DEWE 5000
Voltage:	<input type="checkbox"/> 100 .. 240V AC
	<input checked="" type="checkbox"/> 9 .. 18V DC
Power consumption typ.:	160W
Made by:	DEWETRON
Made in:	AUSTRIA
Serial Nr.	07060260
Ref. Nr.:	4 7 7 4 4

Windows® XP
OEM Software



Product Key: GXTRH - 3

X11 - 45391

Label not to be sold separately





Charge Input

Zero

Output 10Ω

Kistler Instrumente AG
Winterthur Switzerland
Type 501B10
SN 1041951
230/15V-48...62Hz 20VA

Remote Control

Warning!
Disconnect power before opening!

set for 230V~



Power



Made in Switzerland



Charge Amplifier

- LP Filter On Error
- TC Long Short Medium



T S LP TC
Transducer Sensitivity [pC/Mechanical Unit]
Scale [Mechanical Units/V]
Filter (Low-Pass)
Time Constant (High-Pass Filter)

Menu

Cursor Lock

Operate Reset

Remote Local

KISTLER Type 5011



KISTLER

Type 8712A5M1

SN 2035441

Messbereich
Gamme de mesure
Measuring range

± 5 g

Empfindlichkeit
Sensibilité
Sensitivity

1008 mV/g

Seitenempfindlichkeit
Sensibilité transversale
Transverse sensitivity

0.2 %

Eigenfrequenz
Fréquence propre
Resonant frequency

25.1 kHz

Temperatur
Température
Temperature

-54 - 100 °C





CE
KISTLER
8712A5M1
SN 2035440
K-Shear®
US PAT NO
5512794





LP Filter On Error
TC Long Short Medium

Transducer Sensitivity [pC/Mechanical Unit]
Scale [Mechanical Units/V]
Filter [Low-Pass]
Time Constant [High-Pass Filter]

Menu

Display

Operable

Power

Type 3011

KISTLER
3011



25.1 KHz
-54 + 100 °C

Frequency
Temperature
Temperature

Reset

Remote



Local



KISTLER

Type 5011

KISTLER

tested: 26.06.00 / bal



BALL - IMPACT SYSTEM



VOLTMETER



AMPEREMETER



POWER



EMERGENCY



HEIGHT

CONVERTER

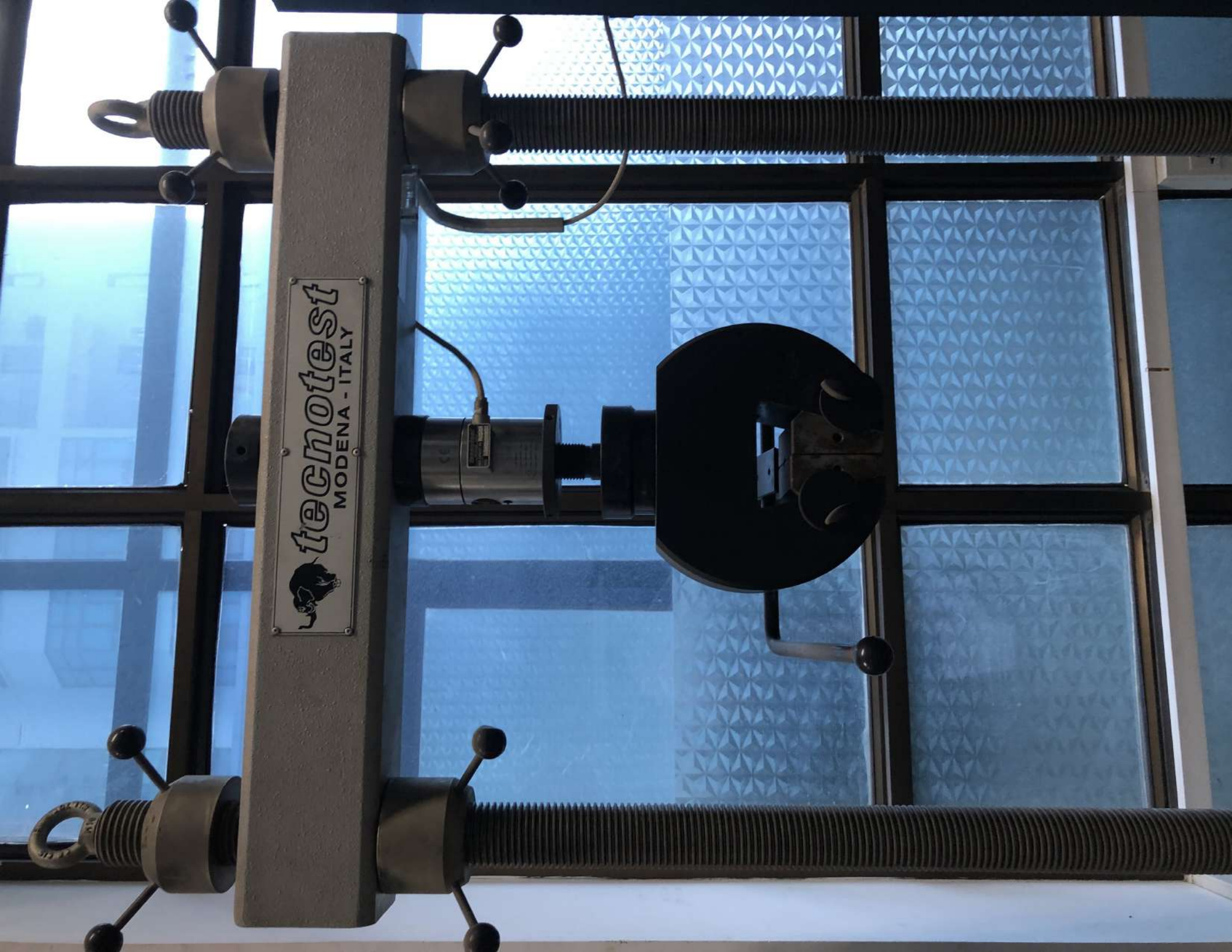
SYSTEM CONTROL

HỆ THỐNG THỬ NGHIỆM ĐỘ BỀN CƠ HỌC KÍNH AN TOÀN BẰNG BỊ THẬP
MECHANICAL STRENGTH OF SAFETY GLAZING TESTING SYSTEM BY BALL IMPACT





 **technotest**
MODENA - ITALY





tecnotest

Macchina Tipo

F 010

Matricola N°

20001









ES 84101



ESCONTECH
MODENA-ITALY
P.L. IN ITALIA
Tel. 059 200000
Fax 059 200000

CE

MACCHINA IDEE
MODELLO A
MADE IN ITALY

MADE IN ITALY

ESCONTECH

ESCONTECH

ESCONTECH

ESCONTECH

ESCONTECH

CE

tecnotest
Coscienza
Tecnica

tecnotest
MODENA-ITALY



via e. de nicola 31
tel. 059 252025
fax 059 253848



MACCHINA SERIE

MATRICOLA N.

ANNO DI COSTRUZIONE

INDUSTRIE CHIMICHE
CUCI S.p.A. ITALIA VET 1984
Tutti i prodotti sono
regolati secondo
le norme CE
Nelle macchine serie...

Phieu kiểm kê 0h 04/01/2021
Đơn vị sử dụng: VMTC
Mã tài sản: A-2.27.03





6 

220V - 50Hz 

7 

5 

Back Panel
Model: 41216
Part No: 41216
Revision: 1.0







SET

OVER

TEST

PLASTIC

AUTO

TIME

1/16

1/8

1/4

1/2

INC

DEC

AUTO

PLASTIC

DIA

ENT/STAT.


RESET

DXT

SHIMADZU



ROCKWELL HARDNESS TESTER
DXT-1 (344-04171-01)
No. I68104100044
V~100, 115, 230HZ50-60VA50

 SHIMADZU CORPORATION
MADE IN JAPAN

DATA ENTRY ACCESS

S/N 55252



S/N 55252

Red stamp with illegible text, possibly a date or manufacturer's mark.



BATTERY ACCESS

S/N 52300



BATTERY ACCESS

6

S/N 52300



JMT

BATTERY ACCESS

S/N 55256



BATTERY ACCESS

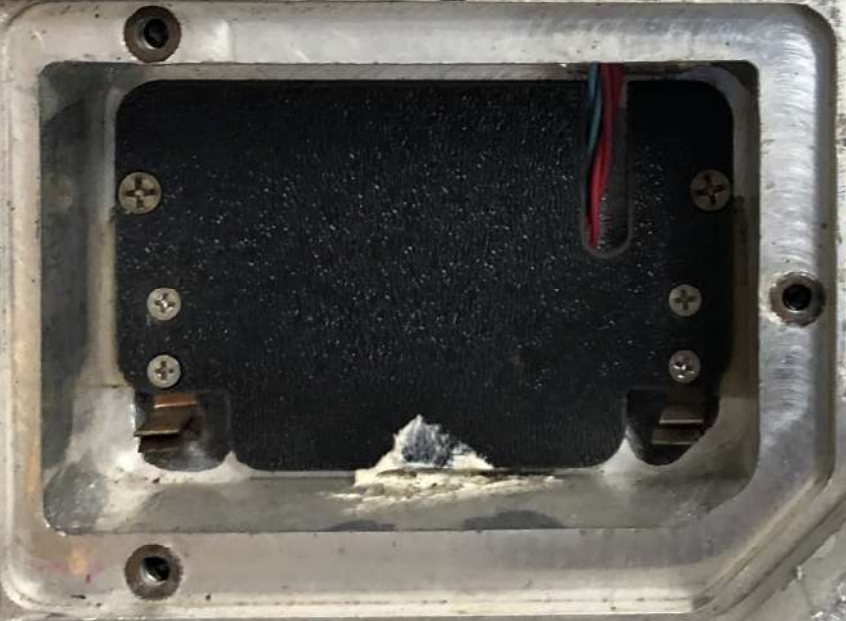


3/N 55256



H 25/7

S/N 55260

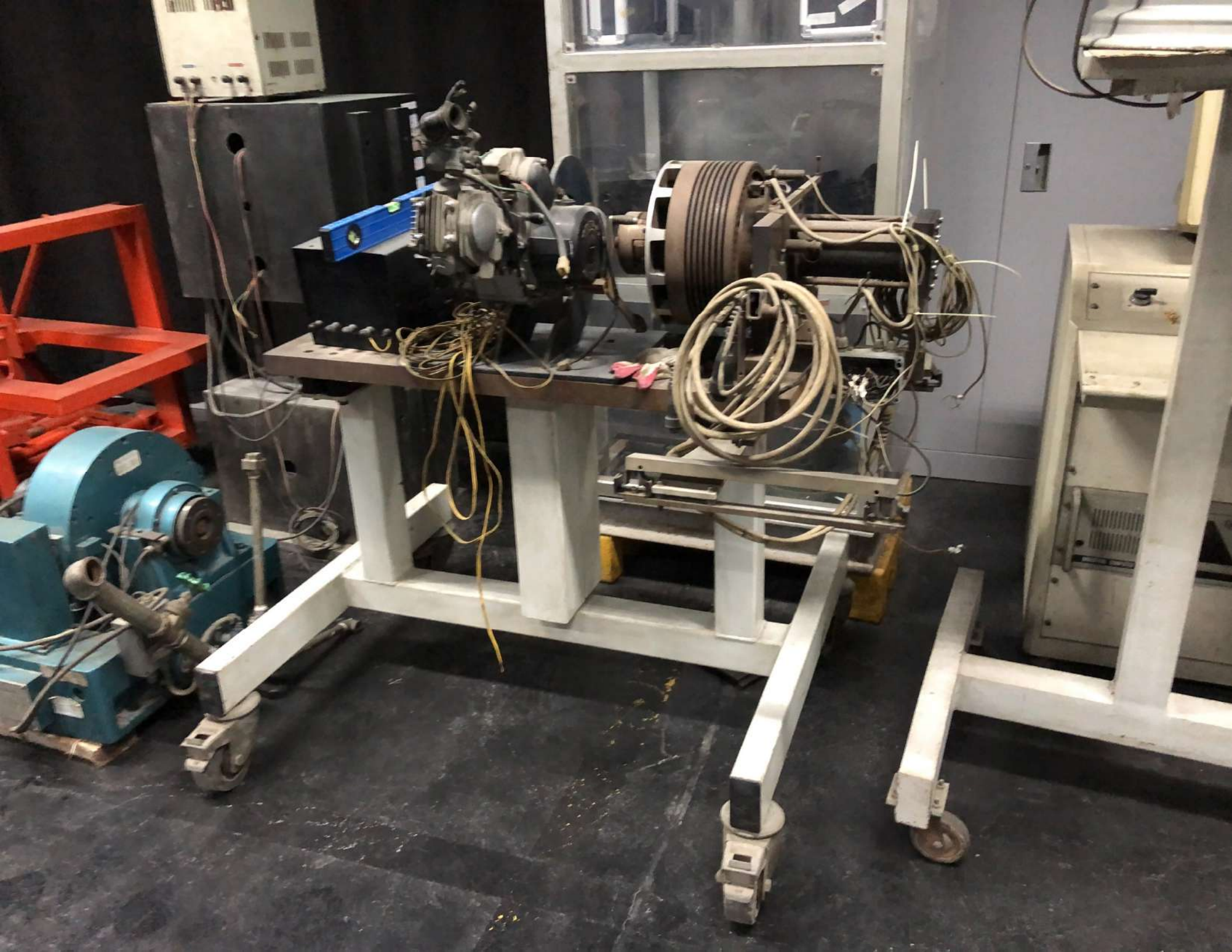


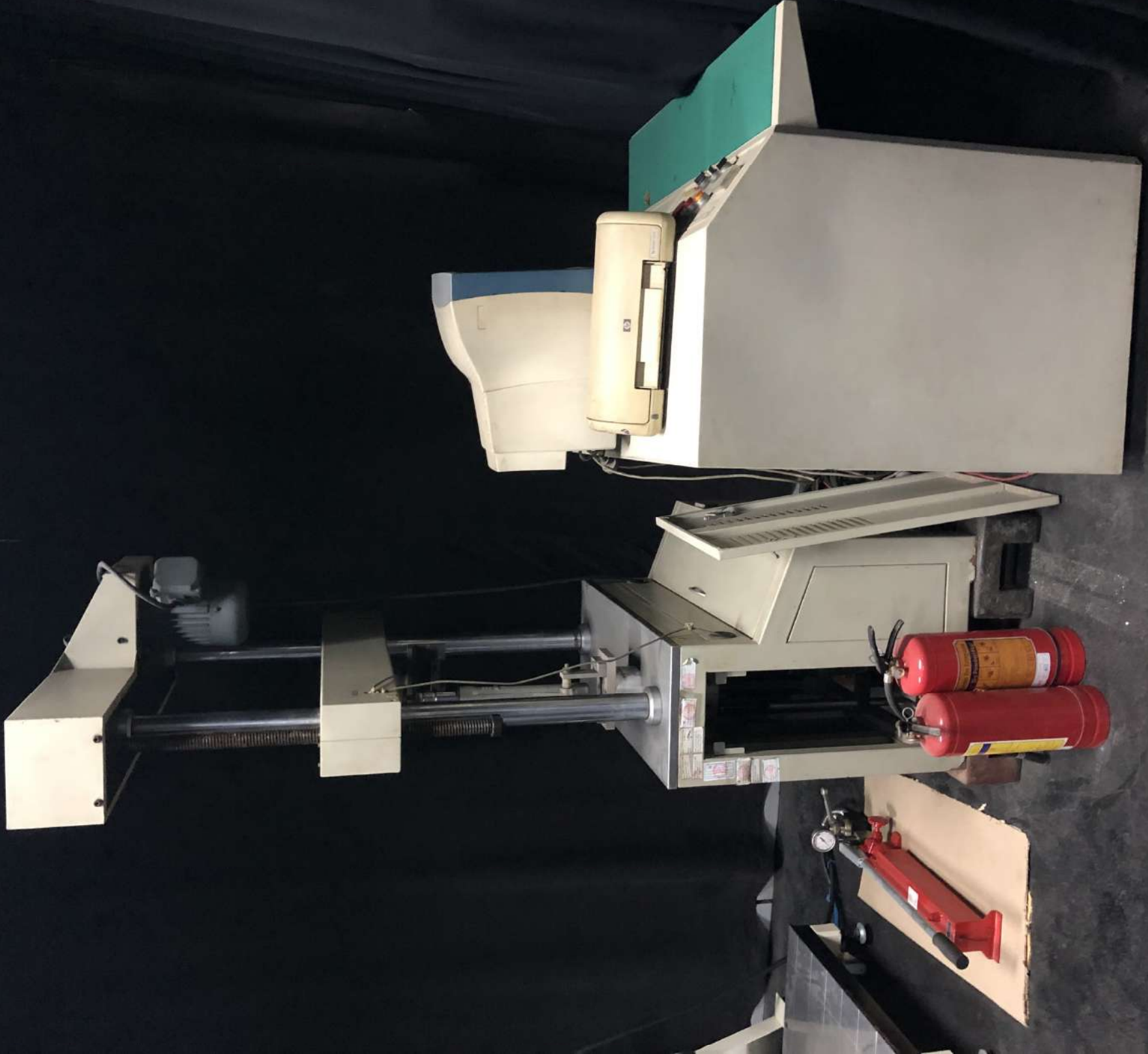
S/N 55260













Phiếu kiểm kê số 01/01/2008
Đơn vị sử dụng: VNTC
Mã tài sản: A.3.01.42

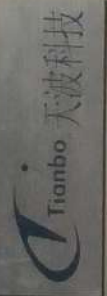
Phiếu kiểm kê số 01/01/2009
Đơn vị sử dụng: VNTC
Mã tài sản: A.3.01.42

Tên: Thiết bị kiểm tra giảm
xóc SAT-1
Mã số: A.3.01.42
Số TT: 48

Phiếu kiểm kê số 01/01/2011
Đơn vị sử dụng: VNTC
Mã tài sản: A.3.01.42



SHOCK ABSORBER TESTING BENCH FOR MOTORCYCLE

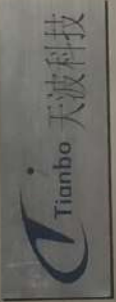


SHOCK ABSORBER TESTING BENCH FOR MOTORCYCLE

Tianbo 天波科技



SHOCK ABSORBER TESTING BENCH FOR MOTORCYCLE



S/N 52311

BATTERY ACCESS







speed

r.p.m.



command value

speed limitation

● too high

● low low

speed stabilization on/off

torque

Nm



command value

calibrate

0 Nm

calibrator value

power

kW



command value

work

kWh



specific consumption

counter reset

counter start

WEINLICH
STEUERUNGEN

**WEINLICH
STEUERUNGEN**

D - 68 799 REILINGEN

Telefon 0 62 05 - 40 25

Telefax 0 62 05 - 1 77 44

int'l 49 62 05 -

Typ MPW 10

Serien-Nr. 14.105 Baujahr 2001

Schaltplan 10.504/10

Betriebsspannung 1 ph 230 V m Mp 50/60 Hz

Nennstrom 0,36 A

Steuerspannung V~ V_{DC}

Sicherung in der Zuleitg. 16 A

10.352a

SHOCK ABSORBER TESTING BENCH FOR MOTORCYCLE

Tianbo 天波科技

0989.257 9

0988.373.357

9C-668-92





CỬA SỐ 3

VỤ LONG
PHÒNG THỰC NGHIỆM



TIANJIN MOTORCYCLE TECHNICAL CENTER

ADAMTCH

SMOCK ABSORBER TESTING BENCH FOR MOTORCYCLE
MODEL: JTM-100
MAX. 2000W
MAX. 1000RPM
MAX. 1000N

PHILIPS

29C-658-92

INDUSTRIAL COMPUTER 610

ADVANTECH

TIANJIN MOTORCYCLE TECHNICAL CENTER

Serial No. 10000000000000000000
Model No. 610
Date of Mfg. 8.3.1992

POWER

TIMER

START

STOP

INDUSTRIAL COMPUTER 610

TIANJIN MOTORCYCLE TECHNICAL CENTER



Tianbo 天波科技 SHOCK ABSORBER TESTING BENCH FOR MOTORCYCLE

MODEL: ZJ100



COUNTDOWN

STOP

START



MAX. SPEED

STOP

MOV. VIBRA.

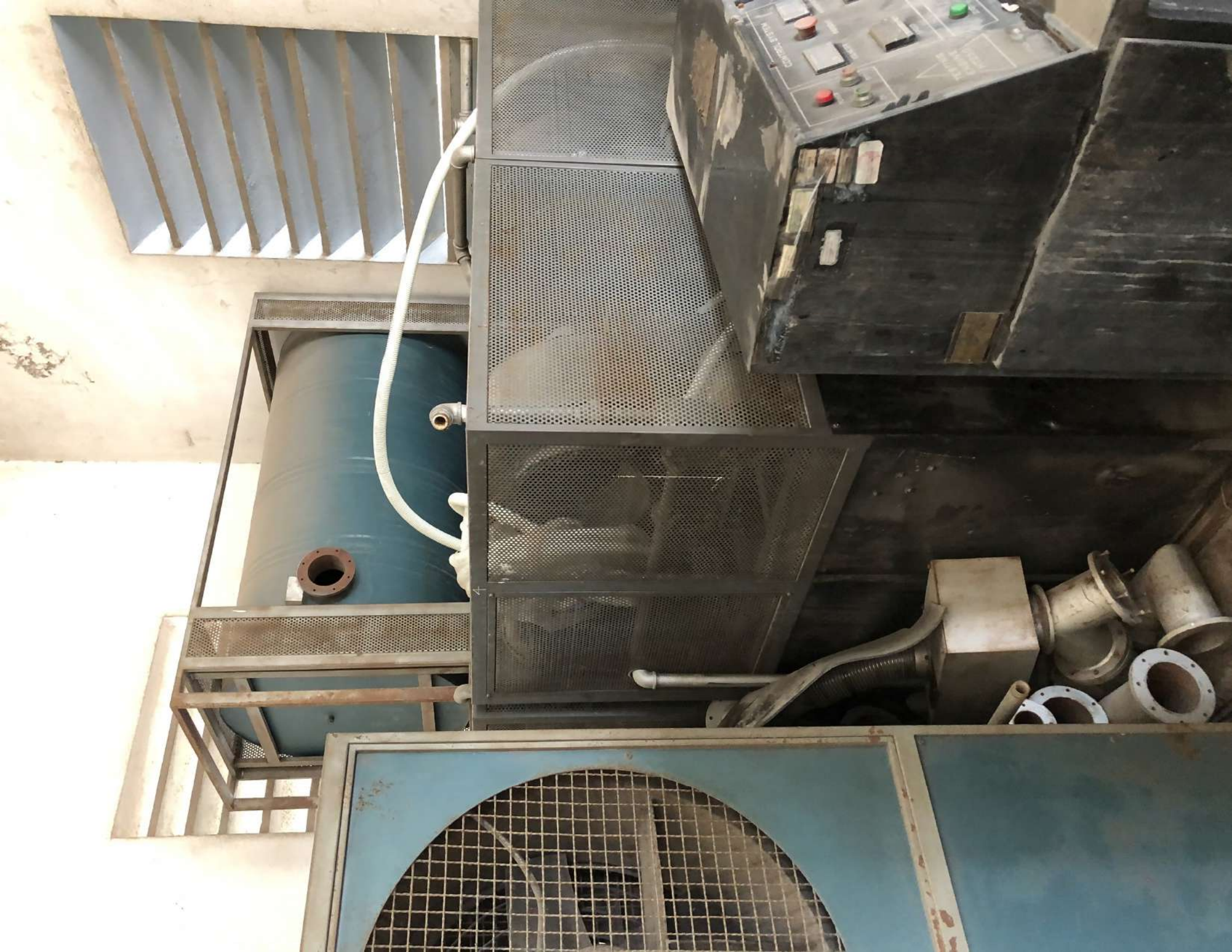
STOP 1 2 3 4 5

VIBRATION SPEED

TIANJIN MOTORCYCLE TECHNICAL CENTER









CONTROL SYSTEM TESTING ENGINE HT250

POWER SOURCE	VOLTAGE	220/380 VAC
	AMPERE	70A
	HZ	50HZ

COOLING SYSTEM	WATER RECIRCULATING	
	TOTAL POWER	7 kW
	TEMPERATURE	MAX. 70° C
	FLOW	MAX. 60 l/min
	Q.VOLUM	MAX. 25000 m ³ /h

EDDY CURRENT DYNAMOMETER	POWER	250 kW
	DC	100 VDC
		5 ADC
	SPEED	7000 rpm
	TORQUE	1100 Nm

TESTING ENGINE HT250

CONTROL SYSTEM TESTING ENGINE HT250

POWER SOURCE	VOLTAGE	220/380 VAC
	AMPERE	70A
	HZ	50HZ

COOLING SYSTEM	WATER RECIRCULATING	
	TOTAL POWER	7 kW
	TEMPERATURE	MAX. 70° C
	FLOW	MAX. 60 l/min

EDDY CURRENT DYNAMOMETER	Q.VOLUM	MAX. 25000 m ³ /h
	POWER	250 kW
	DC	100 VDC
	SPEED	5 ADC
	TORQUE	7000 rpm
		1100 Nm

TESTING ENGINE HT250

Phiên kiểm kê 0h 01/01/2011
Đơn vị sử dụng: VMTC
Mã tài sản: A.3.28.15

Logo of the Ministry of Defense of Vietnam
Tên hiệu chuẩn số
Mã hiệu chuẩn

Thiết bị kiểm tra công
suất động cơ ô tô
Mã số: A.3.28.15
Số: 72

TOA ĐOAN CHUẨN THIẾT BỊ
Thiết bị kiểm tra công suất
động cơ ô tô
Mã số: A.3.28.15
Ngày hiệu chuẩn: 04.10.2009
Hết hạn hiệu chuẩn: 28.09.2011

Phiên kiểm kê 0h 01/01/2009
Đơn vị sử dụng: VMTC
Mã tài sản: A.3.28.15

Phiên kiểm kê 0h 31/12/2011
Đơn vị sử dụng: VMTC
Mã tài sản:

Logo of the Ministry of Defense of Vietnam
Tên hiệu chuẩn số
Mã hiệu chuẩn

TESTING
ENGINE
HT250

POWER

ON OFF

CONTROL SYSTEM

VOLTMETER

EMERGENCY

AMPEREMETER

SPEED

TORQUE

ZERO COOLING SYSTEM ON OVERLOAD

COOLING SYSTEM

AMPEREMETER

TEMPERATURE

VOLTMETER

SW1 SW2 SW3

SW4 SW5



SHOCK ABSORBER TESTING BENCH FOR MOTORCYCLE

Tianbao 天保科技

TIANJIN UNIVERSITY
KEDA MEASUREMENT AND CONTROL
TECHNOLOGY COMPANY







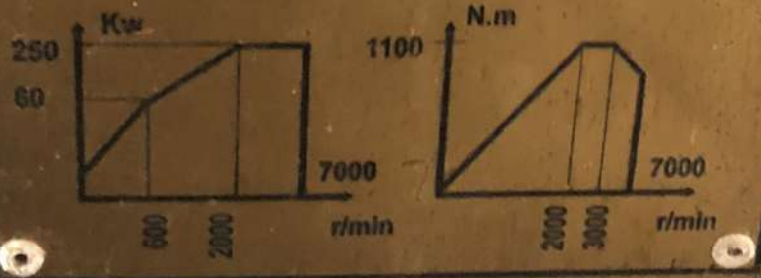


ENGINE TESTING GW250

POWER SUPPLY	POWER	10KV
	VOLTAGE	0 ~ 80 VDC
	CURRENT	5A
EDDY CURRENT	MODEL	GW250
	POWER	250KW
DYNAMOMETER	SPEED	7000 R/MIN
	TORQUE	1100N.M
	ACCURACY	± 0.4%FS

RECIRCULATING WATER COOLING SYSTEM

LABORATORY CONDITION	PRESSURE	0.02 ~ 0.1 MPA
	TEMPERATURE	0 ~ 40°C
	HUMIDITY	20 ~ 90%



TIÊU LÊN CHỮA CHÁY
ĐANG ĐANG



TIÊU LỆNH CHỮA CHÁY

1 **BẢO ĐỘNG**
Khi xảy ra cháy báo động kịp

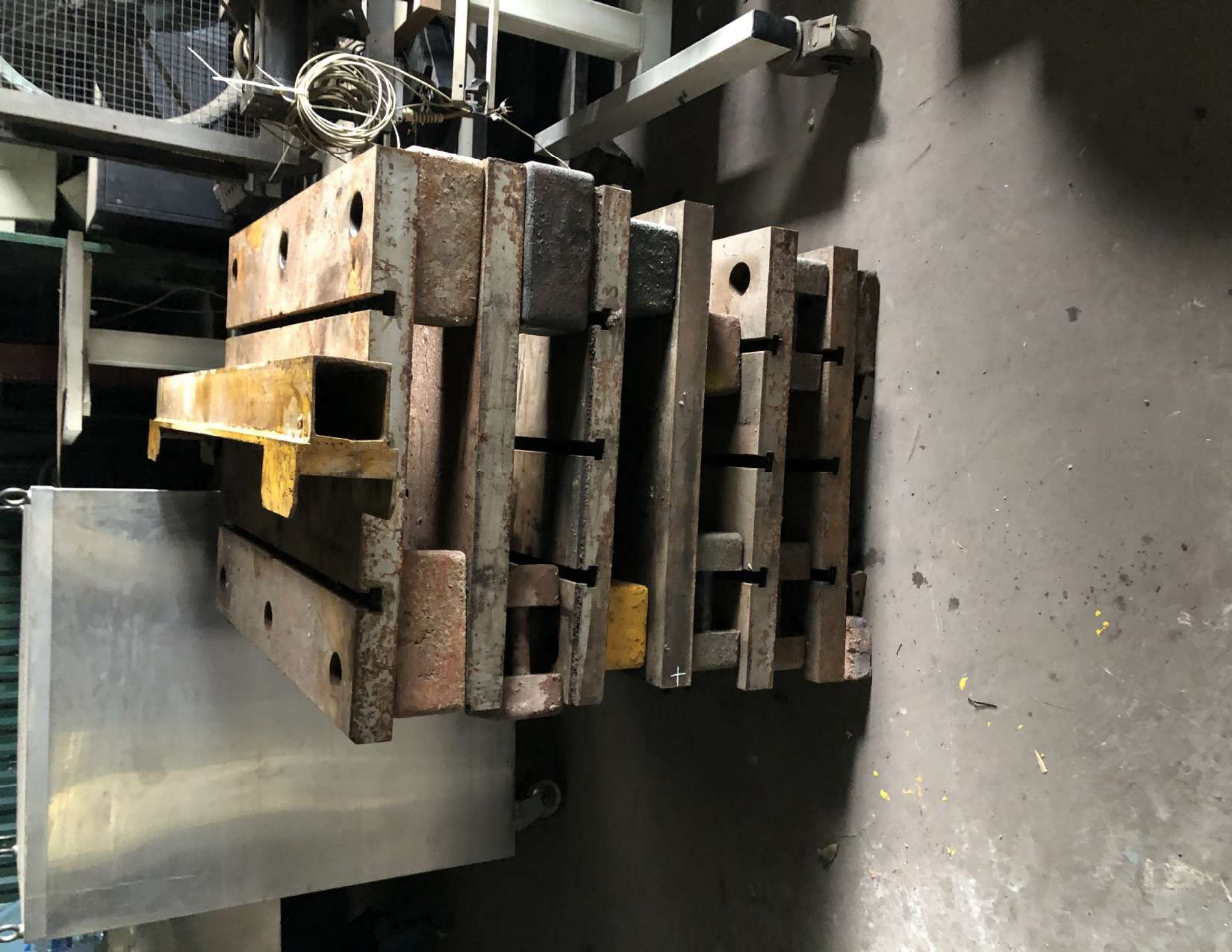
2
CỬA CẦU
KHÔNG ĐƯỢC
MỞ KHI CHÁY

3
ĐIỀU KHIỂN
CHỮA CHÁY
CẮT VÀ NHẬP
ĐỂ CHỮA CHÁY

4
SỬ DỤNG
ĐỒ CHỮA CHÁY
CẤP TIỀN TRƯNG









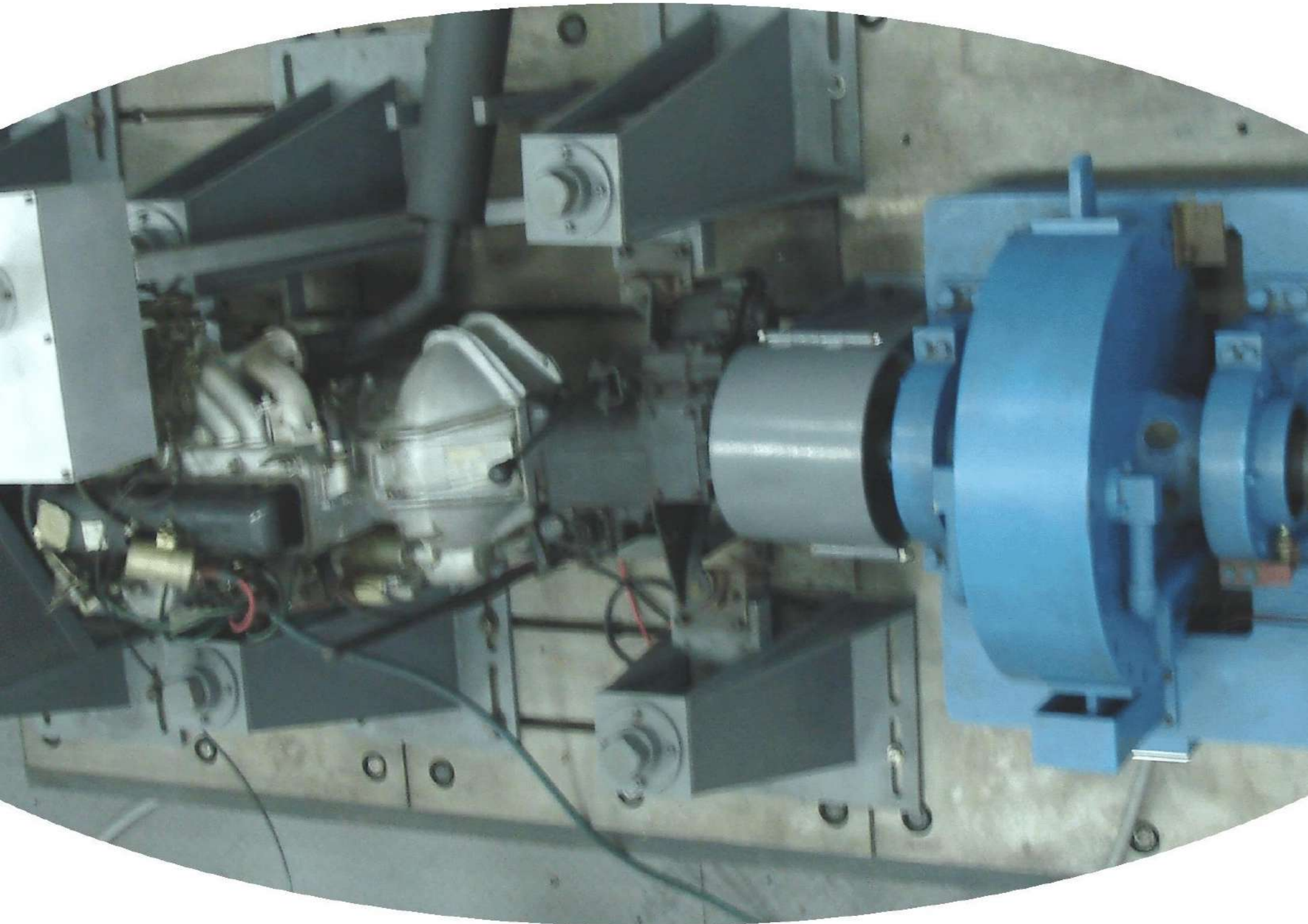




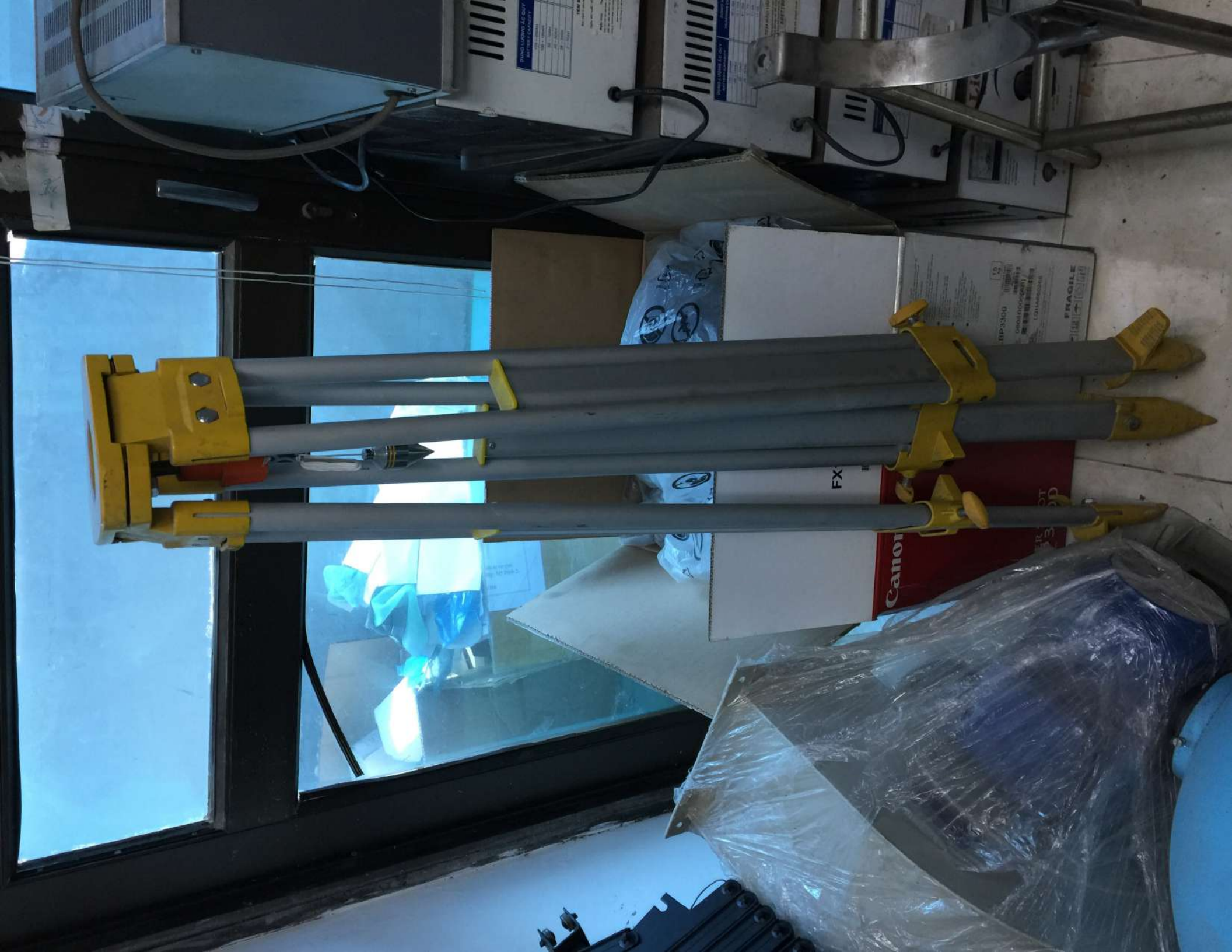


TECHNOLOGY FOR MEDICINE









Yellow and black surveying instrument components, including a circular level and adjustment knobs.

Silver metal tripod legs with yellow plastic clamps and leveling screws.

Canon

FX

FRAGILE
BP3300
HANDLE WITH CARE
DO NOT OPEN
UNLESS NECESSARY
CANON INCORPORATED
USA

TABLE 1.1
SPECIFICATIONS
MODEL: BP3300
SERIAL NO.: 123456789
DATE OF MANUFACTURE: 2010-01-01
MATERIAL: ALUMINUM
WEIGHT: 1.5 kg
DIMENSIONS: 100 x 100 x 100 mm
OPERATING TEMPERATURE: 0 to 40°C
STORAGE TEMPERATURE: -10 to 50°C
RELATIVE HUMIDITY: 10 to 90%
SHOCK: 10 m/s²
VIBRATION: 10 m/s²
ELECTRICAL SAFETY: IEC 60950-1
EMC: EN 61327-2
ENVIRONMENTAL: EN 60721-3-2

TABLE 1.2
SPECIFICATIONS
MODEL: BP3300
SERIAL NO.: 123456789
DATE OF MANUFACTURE: 2010-01-01
MATERIAL: ALUMINUM
WEIGHT: 1.5 kg
DIMENSIONS: 100 x 100 x 100 mm
OPERATING TEMPERATURE: 0 to 40°C
STORAGE TEMPERATURE: -10 to 50°C
RELATIVE HUMIDITY: 10 to 90%
SHOCK: 10 m/s²
VIBRATION: 10 m/s²
ELECTRICAL SAFETY: IEC 60950-1
EMC: EN 61327-2
ENVIRONMENTAL: EN 60721-3-2

TABLE 1.3
SPECIFICATIONS
MODEL: BP3300
SERIAL NO.: 123456789
DATE OF MANUFACTURE: 2010-01-01
MATERIAL: ALUMINUM
WEIGHT: 1.5 kg
DIMENSIONS: 100 x 100 x 100 mm
OPERATING TEMPERATURE: 0 to 40°C
STORAGE TEMPERATURE: -10 to 50°C
RELATIVE HUMIDITY: 10 to 90%
SHOCK: 10 m/s²
VIBRATION: 10 m/s²
ELECTRICAL SAFETY: IEC 60950-1
EMC: EN 61327-2
ENVIRONMENTAL: EN 60721-3-2





2
神州精材
TEL: 02-2612-1111

MEMMERT
LABORATORY

memmert
LABORATORY



STORE 1000111





BROOKS

② KOHZU
神津精機株式会社
TEL: 044-981-2131 (営業時間内)
URL: http://www.kohzu.co.jp/











System x3200 M2

DVD

TAN





DIGITAL
THEODOLITE
DT-200
TOPCON CORPORATION





DT-202L
TOPCON

BCA-7W
SILICA GEL
DESICCANT
PACKET
DO NOT EAT
OR DRINK
FROM THIS
PACKET
DO NOT
REUSE
FOR OTHER
PURPOSES
TOPCON
CORPORATION
1-800-368-7263

SILICA GEL
DESICCANT
PACKET
DO NOT EAT
OR DRINK
FROM THIS
PACKET
DO NOT
REUSE
FOR OTHER
PURPOSES
TOPCON
CORPORATION
1-800-368-7263

DT-205L
160304

The control panel features a central monochrome LCD screen. To the right of the screen are several function buttons: 'R/L' with left and right arrow icons, 'V/%' with a vertical line and percentage icon, 'REP' with an upward arrow icon, 'HOLD', '0 SET', 'POWER', and a green 'I' button. A 'FUNC' button with a sun icon is located below the 'HOLD' button. A large black knob is visible on the right side of the instrument's body.

R/L

V/%

REP ▲

HOLD

0 SET

☀

POWER

FUNC

I